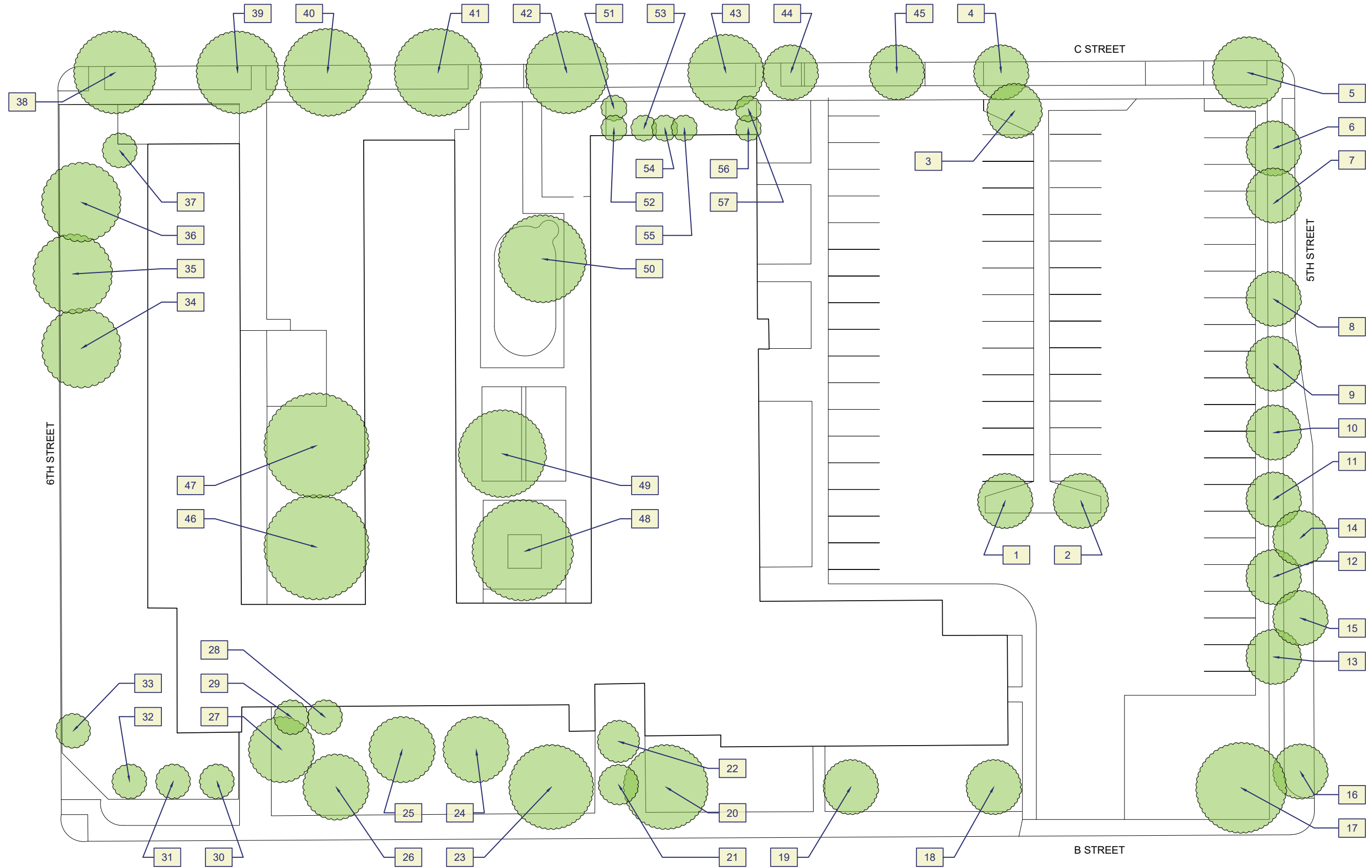


**Davis School-Independent Study**  
526 B St, Davis, CA 95616



## Tree Data

ID	Tree species - Common Name	Botanical Name	Deciduous/ Evergreen	Approx. Height Range (ft)	Approx. Canopy Width (ft)	Trunk Size DBH (in)	Observable Health Condition	Notes
DIS-1	Black Walnut	Junglans nigra	Deciduous	22	20	6	No noticeable problems	
DIS-2	Black Walnut	Junglans nigra	Deciduous	39	50	14	Visible mistletoe, dead branch, sucker growth	
DIS-3	Black Walnut	Junglans nigra	Deciduous	45	34	17	Noticeable lean, lopsided growth over parking stall	
DIS-4	Chitalpa	Chitalpa tashkentensis	Deciduous	20	22	6	Dead branch, under power lines	
DIS-5	Modesto Ash	Fraxinus velutina 'Modesto'	Deciduous	59	56	33	Pruned hard on east side due to power lines, dead branches	
DIS-6	Chinese Hackberry	Celtis Sinensis	Deciduous	56	22	15	Pruned back due to power lines in narrow planter, mistletoe	
DIS-7	Chinese Hackberry	Celtis Sinensis	Deciduous	53	20	13	Significantly pruned back	
DIS-8	Chinese Hackberry	Celtis Sinensis	Deciduous	59	45	18	Mistletoe and suckers	
DIS-9	Chinese Hackberry	Celtis Sinensis	Deciduous	59	36	14	No observable problems	
DIS-10	Chinese Hackberry	Celtis Sinensis	Deciduous	39	22	12	Significant pruning	
DIS-11	Chinese Hackberry	Celtis Sinensis	Deciduous	53	22	13	Most growth is on south side of tree, growth over parking lot likely pruned due to aphid drip	
DIS-12	Chinese Hackberry	Celtis Sinensis	Deciduous	53	22	16	Most growth is on south side of tree, growth over parking lot likely pruned due to aphid drip	
DIS-13	Chinese Hackberry	Celtis Sinensis	Deciduous	53	39	16	Most growth is on south side of tree, growth over parking lot likely pruned due to aphid drip	
DIS-14	Modesto Ash	Fraxinus velutina 'Modesto'	Deciduous	53	20	17	Dead branches, sucker growth	
DIS-15	Modesto Ash	Fraxinus velutina 'Modesto'	Deciduous	45	28	13	Dead branches, poor branching structure	
DIS-16	Modesto Ash	Fraxinus velutina 'Modesto'	Deciduous	59	45	22	Mistletoe, dead branches	
DIS-17	Fruitless mulberry	Morus alba 'fruitless'	Deciduous	59	73	31	Needs pruning	
DIS-18	Unknown		Deciduous	34	25	7	Visible sap, surface roots	Alternating leaf, 10 leaves, smooth ledge, pointed tip
DIS-19	Sawleaf Zelkova	Zelkova serrata	Deciduous	42	34	15	No observable problems	
DIS-20	Sawleaf Zelkova	Zelkova serrata	Deciduous	42	45	14	No observable problems	
DIS-21	Crape myrtle	Lagerstroemia indica	Deciduous	22	14	5	No observable problems	
DIS-22	Crape myrtle	Lagerstroemia indica	Deciduous	22	14	5	no observable problems	
DIS-23	Sawleaf Zelkova	Zelkova serrata	Deciduous	48	20	11	No observable problems	
DIS-24	Green Ash	Fraxinus pennsylvanica	Deciduous	70	50	21	No observable problems	
DIS-25	Green ash	Fraxinus pennsylvanica	Deciduous	59	39	18	No observable problems	
DIS-26	Sawleaf Zelkova	Zelkova serrata	Deciduous	45	39	12	No observable problems	
DIS-27	Green Ash	Fraxinus pennsylvanica	Deciduous	53	50	21	Mistletoe, sucker growth	
DIS-28	Crape Myrtle	Lagerstroemia indica	Deciduous	0	17	7	Narrow planter up against the building	
DIS-29	Crape Myrtle	Lagerstroemia indica	Deciduous	28	17	7	Narrow planter up against the building	
DIS-30	Citrus	Citrus	Evergreen	6	6	3	No observable problems	
DIS-31	Maple	Acer	Deciduous	17	6	2	No observable problems	
DIS-32	Fig	Ficus carica	Deciduous	17	14	8	No observable problems	

Data Collection - Davis School-Independent Study - Tree Data

DIS-33	Chitalpa	Chitalpa tashkentensis	Deciduous	8	6	2	No observable problems
DIS-34	Modesto Ash	Fraxinus velutina 'Modesto'	Deciduous	48	62	22	Large broken trunk. in powerlines, needs pruning
DIS-35	Elm	Ulmus	Deciduous	59	50	10	Appears to be a volunteer. Several inches from street curb and powerlines. Canopy crossing with adjacent trees
DIS-36	Modesto Ash	Fraxinus velutina 'Modesto'	Deciduous	53	56	27	Sucker grows in powerlines, needs pruning
DIS-37	Crape Myrtle	Lagerstroemia indica	Deciduous	20	17	4	No observable problems
DIS-38	London Plane	Platanus x acerifolia	Deciduous	50	56	21	In powerlines. Large wound at trunk at 25 feet. Has been severely pruned due to powerlines.
DIS-39	Modesto Ash	Fraxinus velutina 'Modesto'	Deciduous	48	22	29	Poor shape. Lots of sucker growth. Significant decay on trunk in powerlines
DIS-40	Modesto Ash	Fraxinus velutina 'Modesto'	Deciduous	48	50	26	in powerlines. Needs pruning. Decay on trunk. Sucker growth
DIS-41	Modesto Ash	Fraxinus velutina 'Modesto'	Deciduous	48	45	23	Decay on trunk in powerlines, sucker growth
DIS-42	Modesto Ash	Fraxinus velutina 'Modesto'	Deciduous	48	50	30	In powerlines. Some sucker growth. Some dead branches
DIS-43	Modesto Ash	Fraxinus velutina 'Modesto'	Deciduous	45	39	25	in powerlines. Sucker growth. Some decay on trunk
DIS-44	Modesto Ash	Fraxinus velutina 'Modesto'	Deciduous	34	34	25	in powerlines. sucker growth. large hedge at base of tree. noticeable decay at trunk
DIS-45	Chitalpa	Chitalpa tashkentensis	Deciduous	34	28	9	Sucker growth, in power lines, needs pruning, possible disease
DIS-46	Fruitless mulberry	Morus alba 'fruitless'	Deciduous	62	56	41	Needs pruning
DIS-47	Fruitless mulberry	Morus alba 'fruitless'	Deciduous	62	50	26	Significant surface routes. needs pruning
DIS-48	Fruitless mulberry	Morus alba 'fruitless'	Deciduous	62	56	36	Could use some pruning. branches resting on roof, large surface roots at base
DIS-49	Green Ash	Fraxinus pennsylvanica	Deciduous	56	34	24	Mistletoe and some dead branches
DIS-50	London Plane	Platanus x acerifolia	Deciduous	64	50	0	No observable problems
DIS-51	Shrubby Yew Pine	Podocarpus macrophyllus 'Maki'	Evergreen	17	6	4	No observable problems
DIS-52	Shrubby Yew Pine	Podocarpus macrophyllus 'Maki'	Evergreen	17	6	4	No observable problems
DIS-53	Shrubby Yew Pine	Podocarpus macrophyllus 'Maki'	Evergreen	17	6	4	No observable problems
DIS-54	Shrubby Yew Pine	Podocarpus macrophyllus 'Maki'	Evergreen	17	6	4	No observable problems
DIS-55	Shrubby Yew Pine	Podocarpus macrophyllus 'Maki'	Evergreen	17	6	4	No observable problems
DIS-56	Shrubby Yew Pine	Podocarpus macrophyllus 'Maki'	Evergreen	17	6	4	No observable problems
DIS-57	Shrubby Yew Pine	Podocarpus macrophyllus 'Maki'	Evergreen	17	6	4	No observable problems